



Welcome to Oldbury Wells School A STUDENT'S GUIDE

Name: _____

Form: _____



In year 7
we expect you to...

Be
Kind

AIM
HIGH

Work
Hard

Our School

ETHOS, VISION, VALUES

Secure personal successes and positive futures for our students

Empower students through effective education, life-skills and personal development

Provide a first-class education, rounded and modern providing rich opportunities and experiences

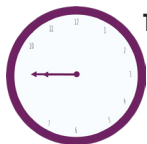
Foster high aspirations, develop our students' potential and nurture their drive for success

Challenge and support each individual to work hard, and be actively involved in the school community

Share a commitment of purpose and pride in our school, working together as a team with a friendly ethos



The School



The school day starts at 8:45am and finishes at 3:05pm.



Coaches depart at 3:15pm.

At 8:45 you will have:

- Form time - Where your tutor will give you important information for the day
 - Assembly - lead by your head of year

You will have 5 lessons per day, one hour each.

Example Timetable:

	MON	TUE	WED	THUR	FRI
	FORM				
1	ENGLISH	SCIENCE	RE	GEOGRAPHY	FRENCH
2	MATHS	HISTORY	ENGLISH	MATHS	SCIENCE
	BREAK				
3	SCIENCE	MATHS	DRAMA	ENGLISH	HISTORY
4	MUSIC	ART	PE	ART	ENGLISH
	LUNCH				
5	FRENCH	TECH	MATHS	SCIENCE	MATHS

Subject Areas:

English

Maths

Science

Languages

Geography

History

Technology

Art

Food

IT

Drama

Music

PE

Religion and Citizenship

PSHE

YOU WILL HAVE A
RANGE OF DIFFERENT
SUBJECTS EACH DAY!

Break and Lunchtime

- At break and lunchtime you can meet your friends in the canteen or in our outdoor spaces. The field and playground are great places to meet up.
- You can buy food and snacks from the canteen, or have a packed lunch brought from home.
- You won't use cash to pay for your food at lunchtimes. Your parents can top up ParentPay, and you will use your thumbprint or pin number at the till!



Be
Kind

AIM
HIGH

Work
Hard

UNIFORM

Girls

- Fitted black blazer with school logo
- White Shirt
- Pleated/plain mid-grey skirt no shorter than 2 inches above the knee
- Plain mid-grey trousers
- Year 7 Lower School Tie
- Socks (black, white or grey)
- Tights (grey, black or natural)
- Flat black polishable shoes (no boots or trainers, no logos)

OPTIONAL

- Cardigan, grey with school logo
- Unisex Sweater, grey with school logo
- Unisex slipover, grey with school logo

Boys

- Fitted black blazer with school logo
- White Shirt
- Flat/Pleated front mid-grey trousers
- Year 7 Lower School Tie
- Socks (black, white or grey)
- Black polishable shoes (no boots or trainers, no logos)

OPTIONAL

- Unisex Sweater, grey with school logo
- Unisex slipover, grey with school logo

PE

Girls

- PE T-shirt with school logo
- Black PE skort or black leggings (no brands)
- Purple knee length PE socks

Boys

- Rugby/Football top
- PE T shirt with school logo
- Black PE shorts
- Black with white top PE socks

Necessary Accessories

- Trainers, football boots, shin guards, gum shield.

OPTIONAL

- Training top with school logo

(If there is ever an issue with PE kit a note from a parent MUST be provided)

What is NOT allowed?



- 'Grade One' or extreme haircuts.
- Unnatural hair colours.
- More than one small earring stud in each ear (these will need to be removed for PE lessons)
- Other facial/body piercings
- Make-up also isn't allowed in Years 7, 8 and 9
- Nail extensions, gel, acrylic or shellac

OWS Behaviour Expectations



We use Achievement Points, teacher commendations and praise texts to reward:

Helping teachers and others, excellent behaviour, and other positive actions.

Be Kind

AIM
HIGH

Exceptional effort in the classroom and representing the school in extra-curricular activities.

Producing outstanding classwork and homework.

Work
Hard



ACHIEVEMENT BADGES



CANTEEN FOOD VOUCHERS



1. Be on time, on task and prepared to learn everyday.

2. Keep all electronics and phones off. Phones will be confiscated by staff if seen.

3. Present yourself smartly. Shirts tucked in, coats off, no hoodies or trainers. Staff will confiscate incorrect items.

4. Speak respectfully to staff.

5. Behave respectfully to staff - do so politely, at once and without fuss.

6. Behave respectfully to other students.

7. Have respect for your learning - complete all tasks to the best of your ability.

8. Respect the learning of others - do not talk when the teacher or other students are talking.

9. Respect the classroom environment. Rubbish goes in the bin. Take care of resources.

10. Be a positive ambassador for our school. Behave sensibly in the community and on the bus.

Our expectation is that these are met - sanctions will be used if these simple expectations are not met.

Good attendance at school is vital for success!!

We expect your attendance to stay above 95%!

Be
Kind

AIM
HIGH

Work
Hard

HOMEWORK

*Work
Hard*

Where can I find my homework?

Satchel One

How many pieces will I get?

6-10 per week

How long should I spend on them?

Max 30 minutes per piece

What will it be like?

Assignments/Quizzes/Projects

How to access SatchelOne

You can login online from a computer, or
download the app from the app store.



Top Tip: It's a good idea to complete your homework as soon as it's set, as you might find a lot start to build up!

Useful Websites:



Mathswatch



Office 365



At Oldbury Wells we expect you to:

- Access home learning through Satchel One.
- Pay attention to the task, expected time it may take you, and the due date.
- Complete home learning to the best of your ability or you will be asked to try again.
- Complete home learning on time.

EQUIPMENT

Basic equipment needed for the school day:

- | | |
|--|---|
| <input type="checkbox"/> Pencil Case | Language Dictionary <input type="checkbox"/> |
| <input type="checkbox"/> 2 Black Pens | Water Bottle <input type="checkbox"/> |
| <input type="checkbox"/> 2 Blue Pens | Headphones (for Music) <input type="checkbox"/> |
| <input type="checkbox"/> 2 Green Pens | 2 Reading Books <input type="checkbox"/> |
| <input type="checkbox"/> Compass | |
| <input type="checkbox"/> Pencil | |
| <input type="checkbox"/> Sharpener | |
| <input type="checkbox"/> Ruler | |
| <input type="checkbox"/> Protractor | |
| <input type="checkbox"/> Eraser | |
| <input type="checkbox"/> HB Pencil | |
| <input type="checkbox"/> Pencil Crayons | |
| <input type="checkbox"/> Glue Stick | |
| <input type="checkbox"/> Highlighters | |
| <input type="checkbox"/> Scientific Calculator | |

You can buy
equipment from
our online shop
if needed!



RECOMMENDED READING KS3

Harry Potter

J.K.Rowling

Lord of the Rings

J. R. R. Tolkien

Little Women

Louisa May Alcott

The Hunger
Games Trilogy

Suzanne Collins

His Dark Materials

Trilogy

Phillip Pullman

The Curious Incident of
the Dog in the Night Time

Mark Haddon

Witch Child

Celia Rees

Girl Missing

Sophie McKenzie

Carrie's War

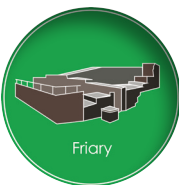
Nina Bawden

To Kill a
Mockingbird

Harper Lee

House System

At Oldbury Wells we have four houses: Castle, Friary, Northgate and Westgate. They are named after notable places around Bridgnorth.



You will be assigned to a house in Year 7, from that point all achievement points will go towards the overall house total!

We run lots of exciting house events throughout the year. There will be inter-house competitions for you to get involved in. Some of the events include:



- Tug-of-war
 - Art
- Photography competitions
 - Times Table Rockstars
 - Football
 - Netball
 - Rugby
 - Dodgeball
 - Badminton
 - Volleyball
 - Handball
 - Tennis



FAQs

Can I bring my phone to school?

Yes, but it must be switched off in your bag. If you are spotted with it, it will be confiscated.

I feel unwell at school...who can help me?

Go to East or West reception and they will phone home for you.

I've forgotten my P.E. kit...what do I do?

Go to East or West reception and they can phone home for you.

I have an injury or issue with PE kit, what do I need to do?

Always provide a note explaining your injury, the PE staff will always keep you involved in the lesson in some form so you MUST still bring your PE kit. If there is an issue with kit please bring something suitable to replace it, along with your note explaining the problem. You will be supplied with kit if you do not have a suitable replacement.

I am too unwell to come into school...

Make sure your parents/guardians phone the school before 8am to let us know the reason you won't be coming in.

What food can I buy in the canteen?

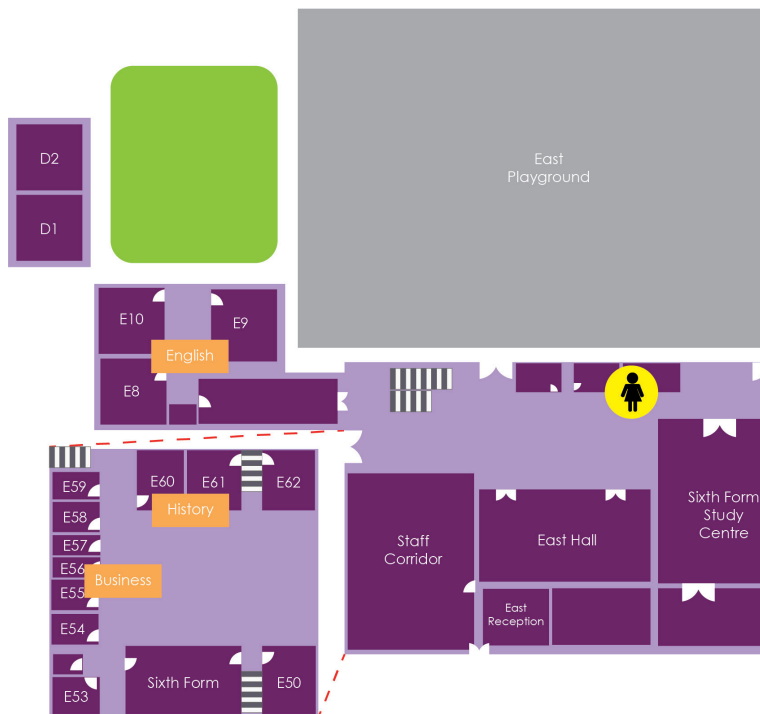
You can purchase food at break and lunchtimes, and choose from a range of sandwiches, drinks, cakes, hot meals and breakfast foods. You can view the full menu on our website!

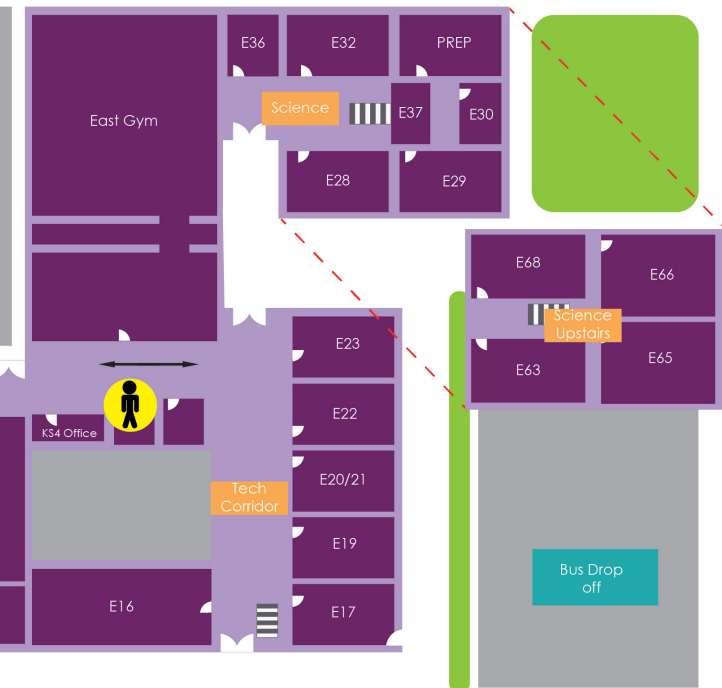
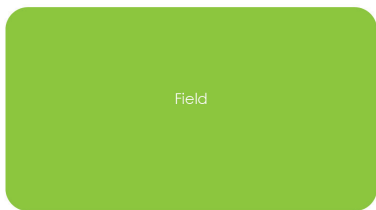
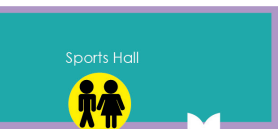
EAST SIDE MAP



There is a road crossing in-between the buildings, you **MUST** look both ways before crossing.

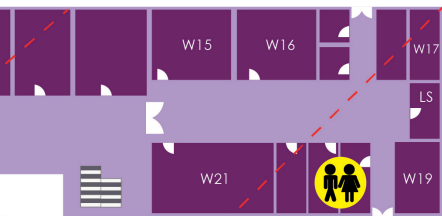
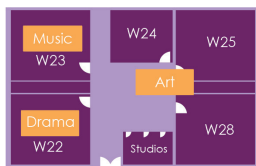
Remember: STOP. LOOK. LISTEN.



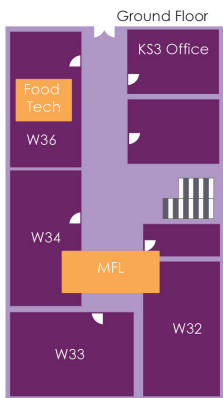


WEST SIDE MAP

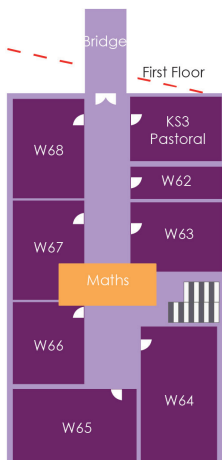




Ground Floor



Ground Floor



First Floor



Be Kind

AIM HIGH

Work Hard



Who to Contact

General Enquiries

school@oldburywells.com

01746 765454

Transition Questions

chris.smith2@oldburywells.com

Day-to-Day first point of contact:

Form Tutor

Email Address:

